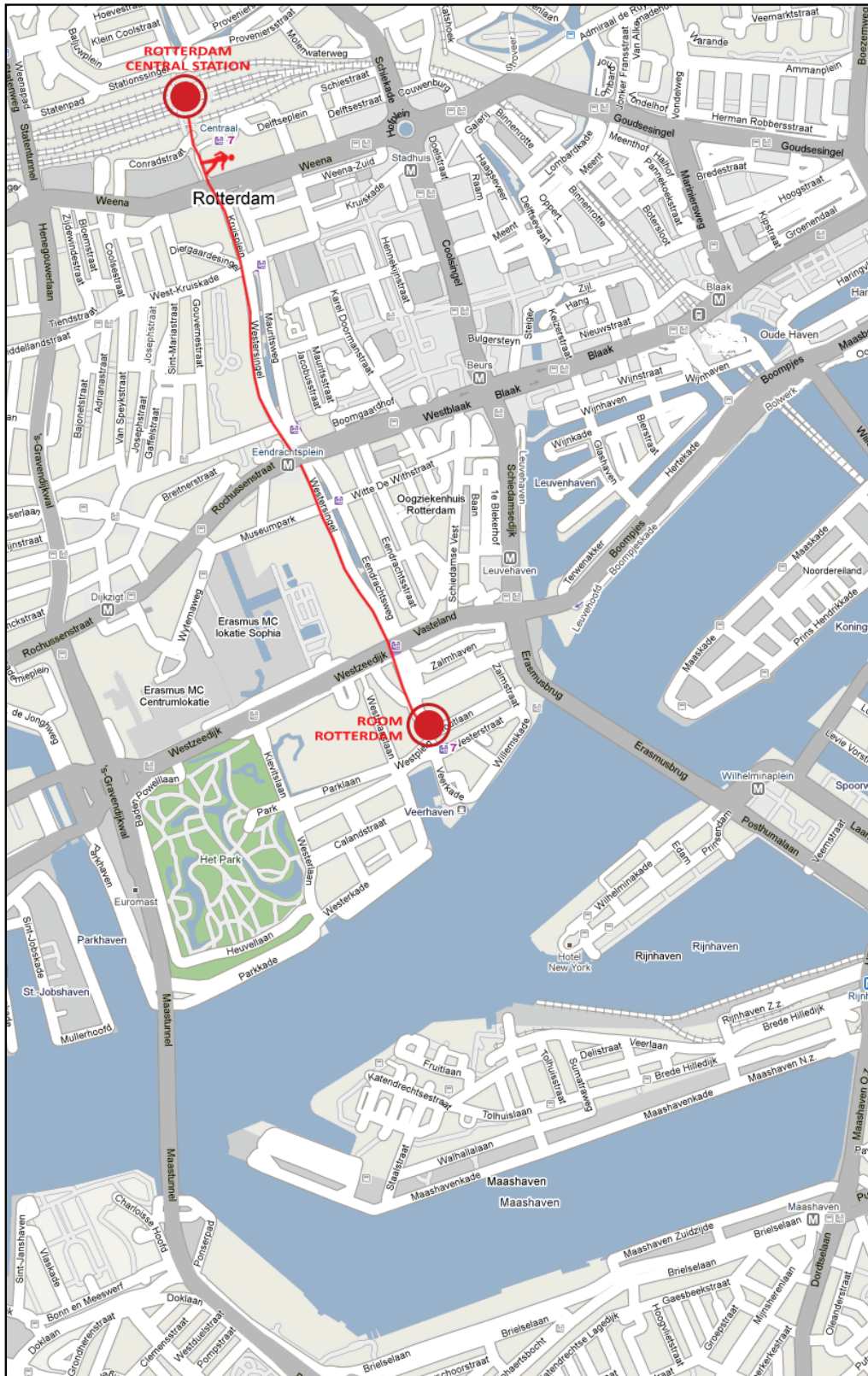




IFoU Summer School 2009

Metropolises in Transformation - The Randstad Challenge

MAP OF ROTTERDAM



From Schiphol to Rotterdam by Train

Get directions by train from the Dutch railway company via: <http://www.ns.nl/en/>

Costs for one-way journey:

1st class : €18.50

2nd class : € 10.90

(prices from the ticket machine)

From Rotterdam Central Station to the Hostel Room Rotterdam

You can either take a 20-minutes walk or take the tram* to the hostel.

Get off at **Westplein** with:

Tram 7 to Willemsplein / Nesserdijk

* You need to buy a ticket in advance.

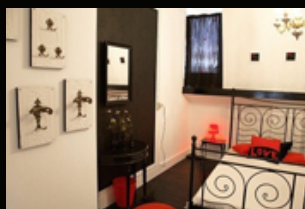
Valid ticket for trams and busses in The Netherlands is the:

“BLUE STRIPPENKAART”

This ticket can be used several times and can be used for multiple persons. Tell the ticket inspector or driver what your destination is, he or she will stamp the ticket according to the amount of persons and your destination.

More information

<http://summerschool.ifou.org/>



Room Rotterdam

Van Vollehoovenstraat 62

3016 BK, Rotterdam

The Netherlands

<http://www.roomrotterdam.nl/>